

Nevada Department of Wildlife



Washoe County Advisory Board

April 26, 2018

Alan Jenne, Habitat Division Chief

Habitat Division



Water Development	Industrial Development Program
Technical Review	Habitat Restoration
Wildlife Management Areas	Heritage and Stamp Program

Water Development

1,725 Guzzlers Statewide

2017 Accomplishments

- 14 total volunteer projects
- Big Game - Built 7 new and rebuilt 8
- Major maintenance on 61 big game and 2 natural springs
- Major maintenance on 6 small game units
- Inspections and minor maintenance on 373 big and small game units



Water Development Volunteers Carry the Program



Average Annual Volunteer Assistance

- \$32.61 X **4,390 Hours** = \$143,157
- .56 X **72,000 Miles** = \$40,320
- Cash/non cash = \$100,000
- Total = \$283,478
- 25% Match for \$1.13 million budget

Northern Volunteer Project Schedule

- May 5: Blue Mountains N & S New Construction
- June 2: Black Canyon Spring Fencing
- June 23: Sulphur Springs Table Mtn. Rebuild

Technical Review



- Coordinate NDOW Comment within NEPA
 - GIS and Database Support
 - Baseline Surveys
 - Avoid, Minimize and Mitigate project related impacts to wildlife or their habitats.
- > 500 Projects Reviewed Annually

Technical Review



Current Projects

Fallon Naval Air Station Expansion

Nevada Test and Training Range LEIS

Washoe County Public Lands Bill

Greater Sage-Grouse LUPA revision

BLM Fuel Breaks PEIS

BLM Habitat Restoration PEIS

Nevada Lithium

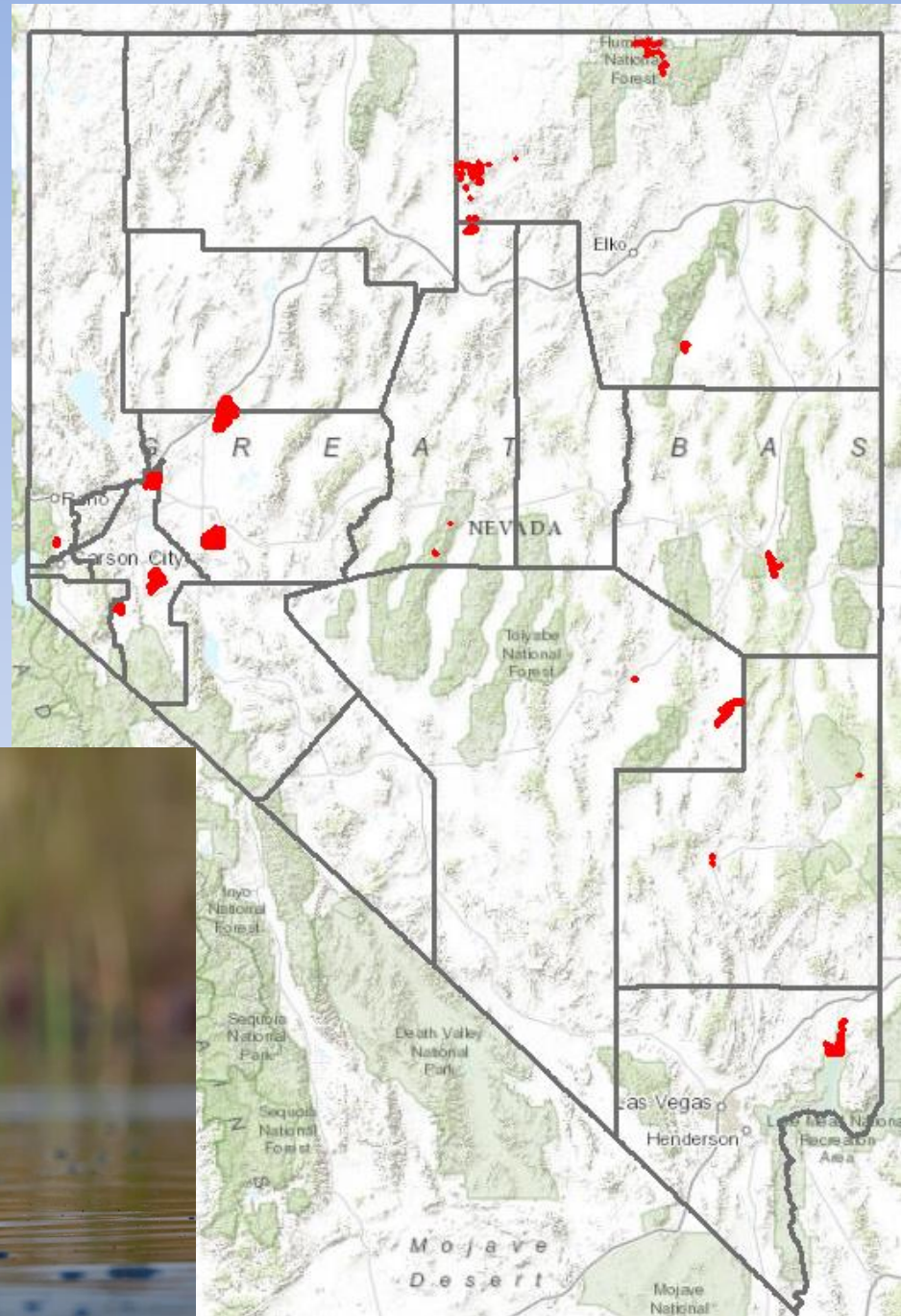
Ruby Mountain Oil & Gas Lease Sale

Westwide Energy Corridor

Fish Springs Solar

Wildlife Management Areas

- > 18 Properties
- > 120,000 acres statewide
- Primarily Wetland/Waterfowl Habitat





WMAs

2017

Lots of Water & Flooding

- Manage and Repair Flood Damage
- Key Pittman Pond Leveling with DU (40 acres)
- Toulon Ditch Cleaning

2018 Projects

- Overton Pond Leveling with DU
- Carson Lake Transfer

08 01 2017

Industrial Development Program

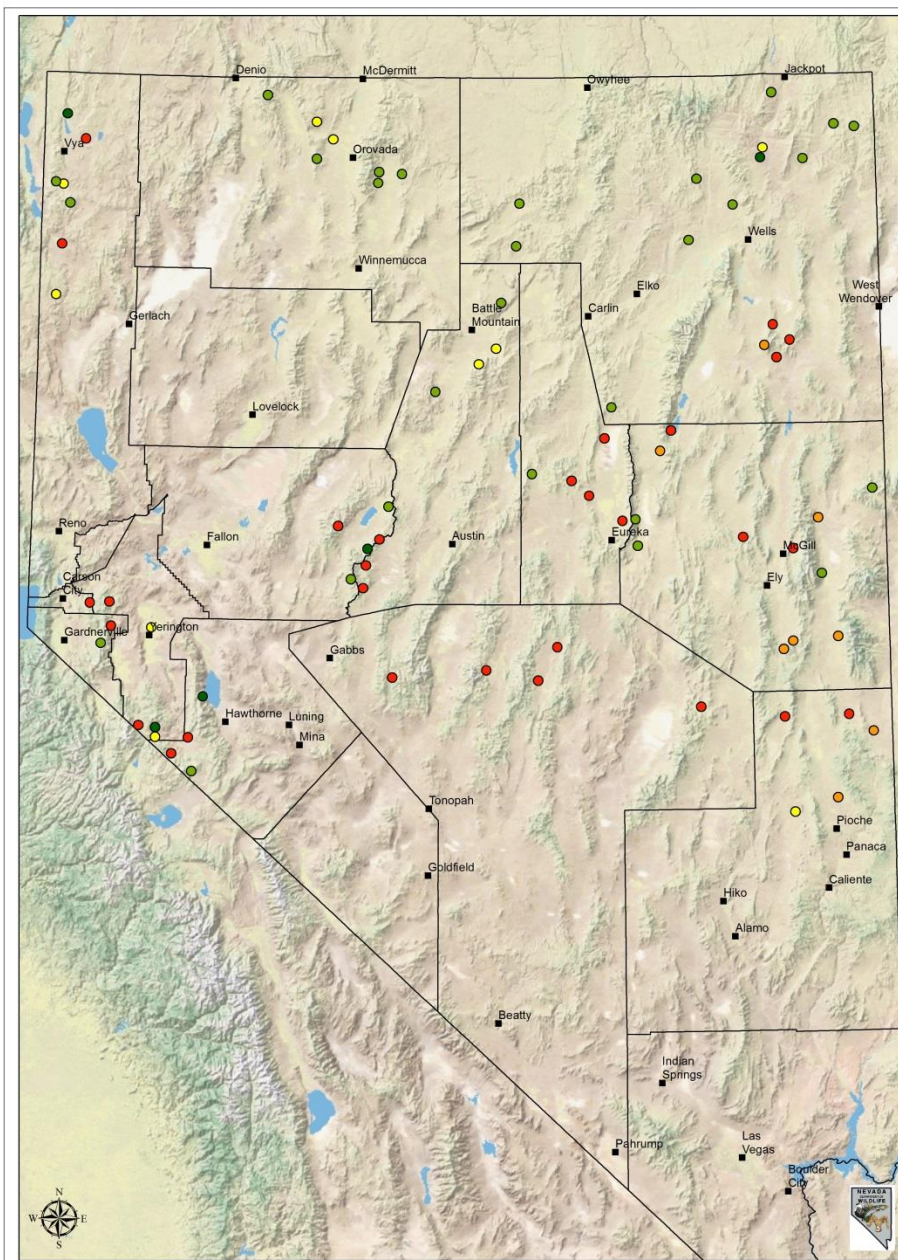
- Monitoring 91 Industrial Artificial Pond Permits
 - Permit ponds harmful to wildlife
 - Promote exclusion measures
 - Assessment fee fund covers program and projects
- Energy Planning and Conservation Fund
 - Energy Production and Transmission Cost Recovery



Habitat Restoration

Nevada Partners for Conservation Development (NPCD)

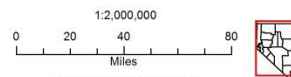
- > 80 Major Projects
- Across 25,000 acres
- Merging Partner Resources in Excess of \$5 million
- Numerous Additional projects in planning and NEPA



Current Habitat Projects Across Northern Nevada

Treatment Type

- Chaining (PJ removal)
- Hand crew and mastication (PJ removal)
- Post-fire seeding
- Spring protection or riparian
- Other type habitat project



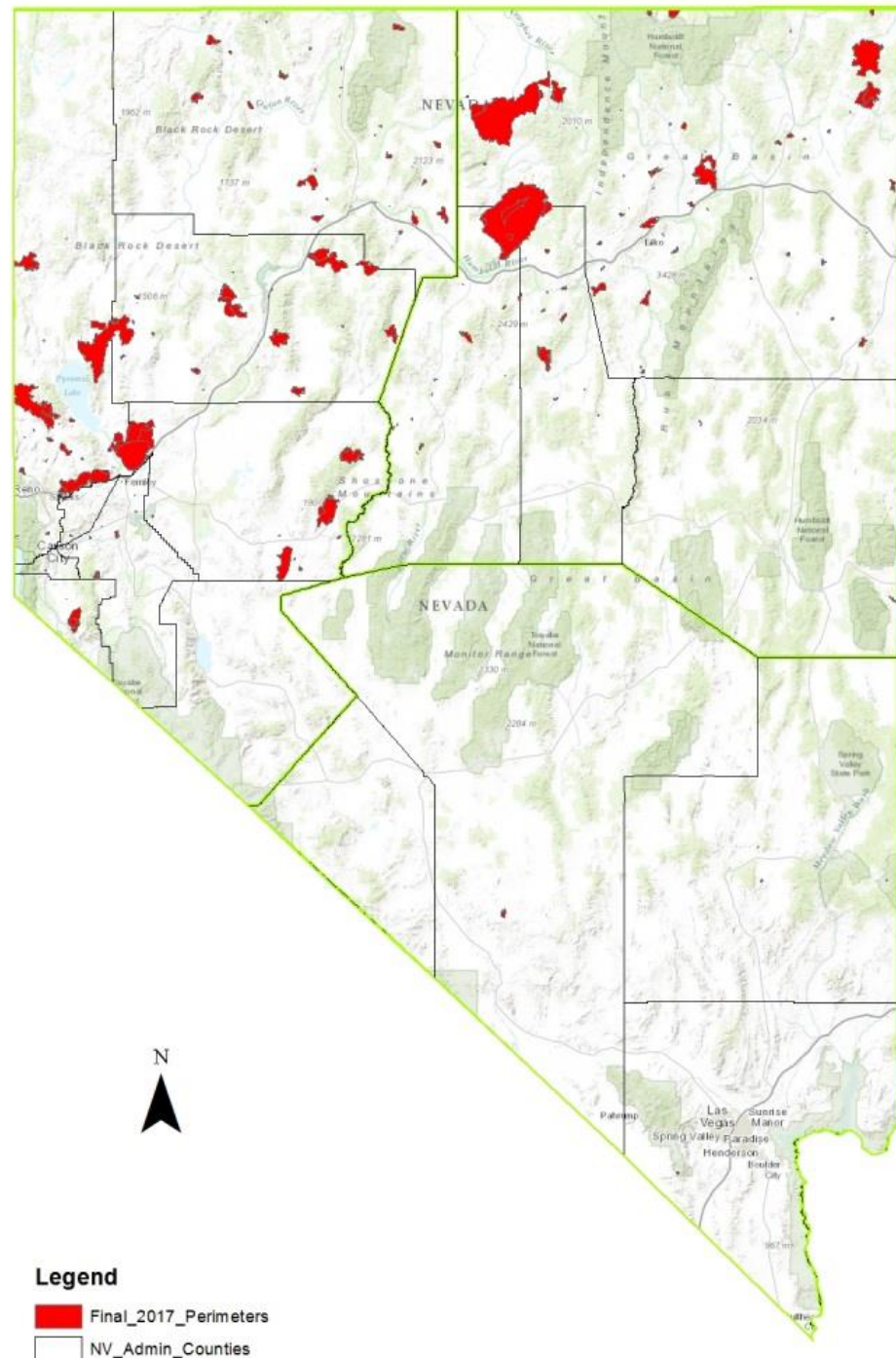
NAD 1983 UTM Zone 11N

V:\ActiveProjects\Habitat\Turner_Leeland\Aug_2015_Commission_11X17_P.mxd

Habitat Restoration

2017

1.2 million acres lost
to wildfire.



Habitat Restoration

Fire Name	BLM/FS/ Other gov. Land Acres	Private Land Acres
Rooster Comb		17,739
Hotpot (south strip)		570
Delano		640
Cole Creek		500
Oil Well		1278
Cottonwood		279
Tabor Flats		960
Transfer Fire		1200
Ely Seed	4000	-
Herbicide Fallow	12000	-
E.R. Sub Totals	16000	23,166
Long Valley	4,411	
Hot Springs	300	541
Bravo 17	2,071	
Tungsten	2,332	
Draw	1,604	
W.R. Sub Totals	10,718	541
Grand Total	26,718	23,707
	50,425	



Fire Rehab. Partners

Provided >\$550,000

NBU

Dream Tag

Carson Valley Chukar Club

Nevada Chukar Foundation

Midas NBU

Nevada Muleys

Elko NBU

Battle Mtn. NWTF

Woodland Village HOA

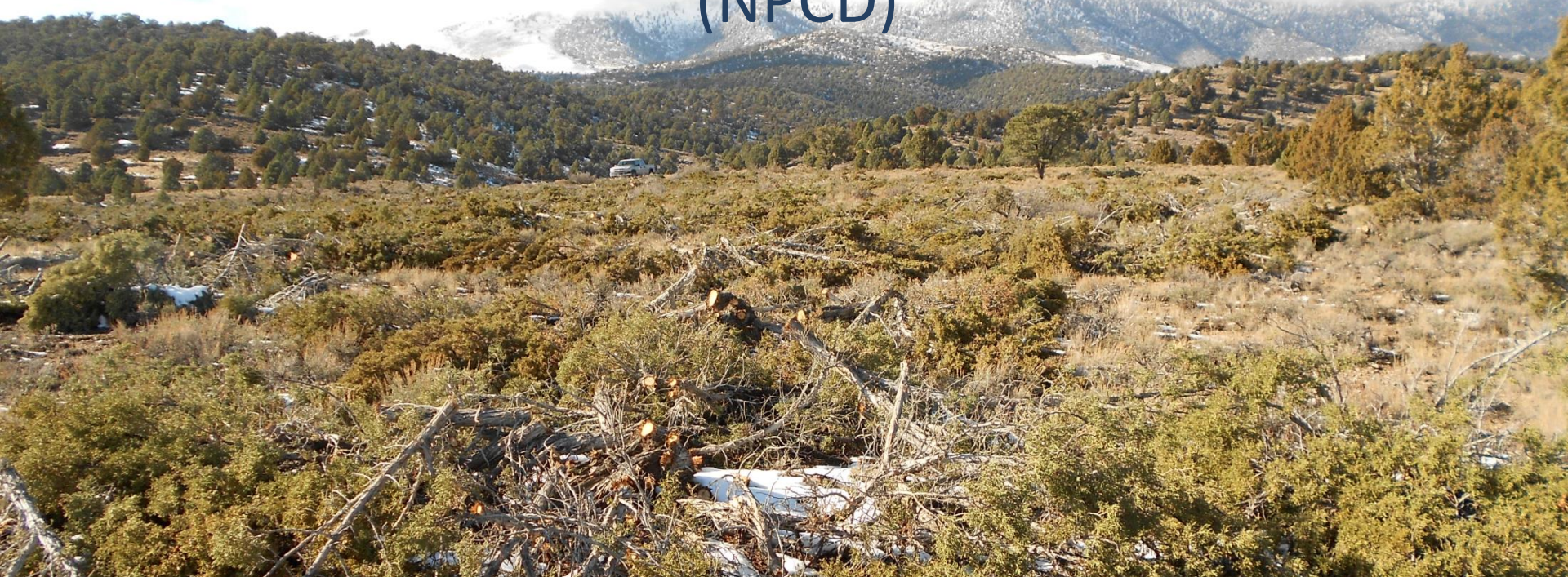
Boy Scouts & Girl Scouts

Combined with HCF, Heritage,
Mitigation Funds and Federal
Grant to achieve approximately
2 million in fire rehab funds



Habitat Restoration

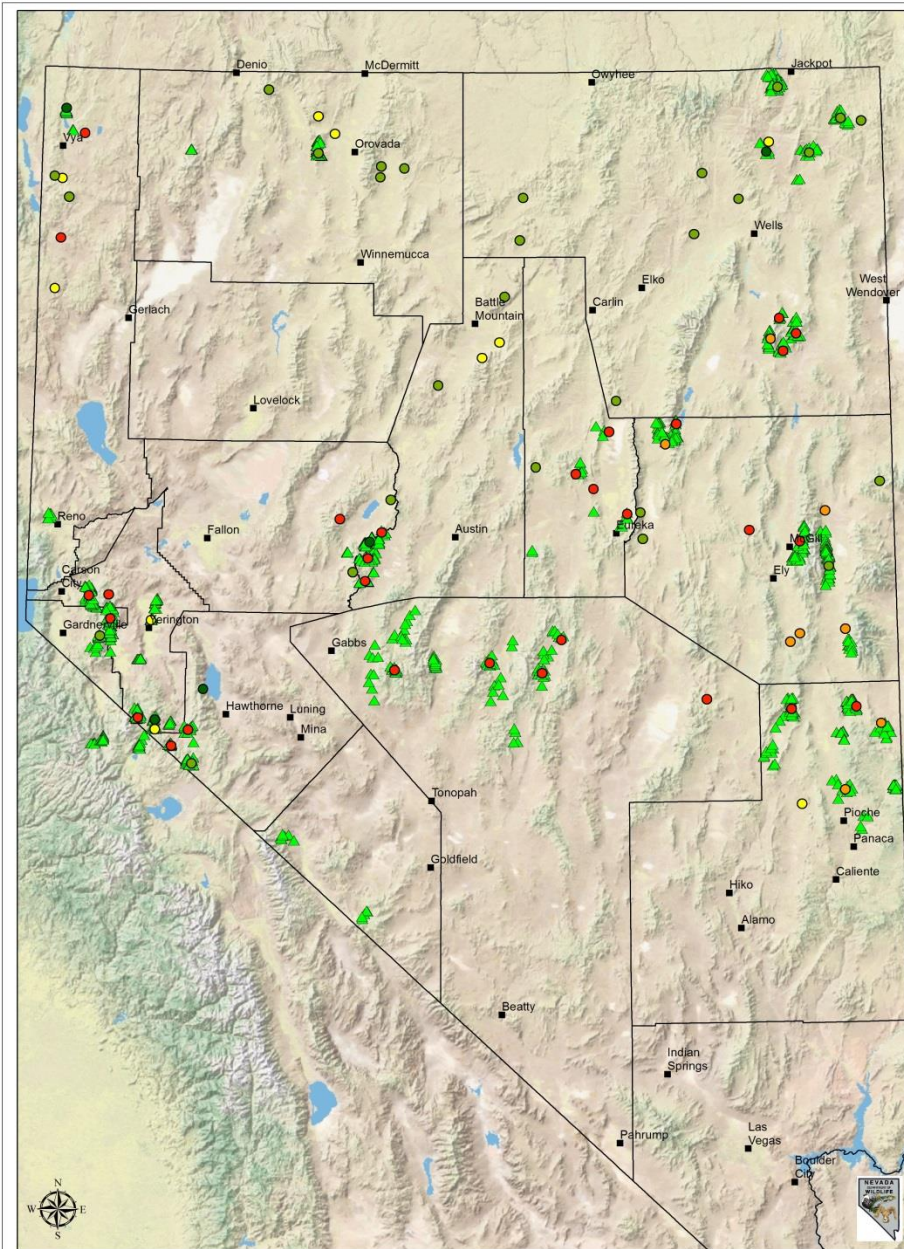
Nevada Partners for Conservation Development (NPCD)



Pinyon Juniper Work			
Pine Nut Range	1,714 ac.	Haggarty Wash (LN)	1,374 ac.
Desatoya Mtns. (CH)	789 ac.	Eagle Butte (LN)	1,881 ac.
Spruce Mtn. (EL)	>5,000 ac.	Mt Moriah (WP)	484 acres
Ash Canyon (LN)	800 acres	Newark Valley (WP)	3,500 ac.

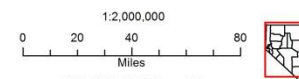
Project Effectiveness Vegetation Monitoring

- Collect Pre Treatment Information
- Compare Post Treatment
- Understand Project Outcomes
- Make Course Corrections
 - Adaptive Management
 - Improve Techniques
- Spend Limited funds more wisely



Current Habitat Projects Across Northern Nevada

- | | |
|--|---------------------------------|
| Treatment Type | ● Post-fire seeding |
| ● Chaining (PJ removal) | ● Spring protection or riparian |
| ● Hand crew and mastication (PJ removal) | ● Other type habitat project |



Heritage and Stamp Programs

Manage & Oversight:
Heritage, Habitat Conservation
Fee, Upland and Duck Stamp

FY19 Estimate

Heritage funds = \$887,474

Duck Stamp = \$83,420

Upland Stamp = \$238,187

Habitat Cons. Fee = \$365,146

Annual Funds = \$1,574,227

FY18 Projects

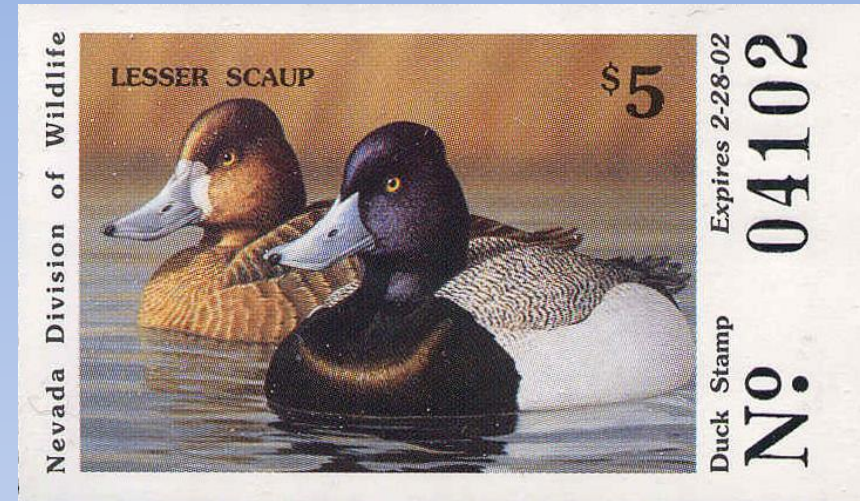
Heritage funds = 11 Projects (\$649,213)

Duck Stamp = 7 Projects (\$87,511)

Upland Stamp = 15 Projects (\$335,094)

Habitat Cons. Fee = 28 Projects (\$720,047)

Annual Funds = 61 projects (\$1,791,865)



Heritage and Stamp Programs

Heritage
Big Game Capture, Monitoring and Disease Surveillance Program
Wildfire-Related Habitat Restoration and Seed Purchase
Toiyabe Bench Habitat Improvement and Mule Deer Investigation
Mule Deer Migration and Survival Study
Overland Pass Pinyon and Juniper Thinning
Goshute Mountains Springs Protection
Spruce Mountain Restoration Project
Ruby Lake NWR Collection Ditch and Ponds Habitat Improvement Project
Key Pittman WMA Wetland Enhancement
Robinson Spring Complex Enclosures in the Diamond Mountains
Cheatgrass Research Using Herbicides and a Biological Control Agent
Helicopter Survey and Maintenance Flights
Haggerty PJ Chaining Maintenance

Duck Stamp
Technician Support for Nevada Waterfowl Projects
Ducks Unlimited Wetlands Conservation Support
Mason Valley WMA Moist Soil Food Plots
Key Pittman WMA Wildlife Food Plots
Overton WMA Farming
Overton WMA Pipe Replacement Project (Phase 1)
Eastern Nevada Properties Weed Control

Upland Stamp
Bi-State Sage-grouse Research and Monitoring
Sharp-tailed Grouse Restoration Project
Dusky Grouse Ecology and Management
Effects of Vegetation Treatments on Sage-grouse in the Desatoya Mountains
Mountain Quail and Ruffed Grouse Translocation
Nevada Greater Sage-grouse Monitoring
Virginia Mountains Sage-grouse Research
Corners for Quail - Quinn River Valley
Key Pittman WMA Wildlife Food Plots
Bi-State Conifer Removal Project
Post-Fire Upland Habitat Restoration - Gold Butte
Eastern Nevada Properties Weed Control

Questions?

